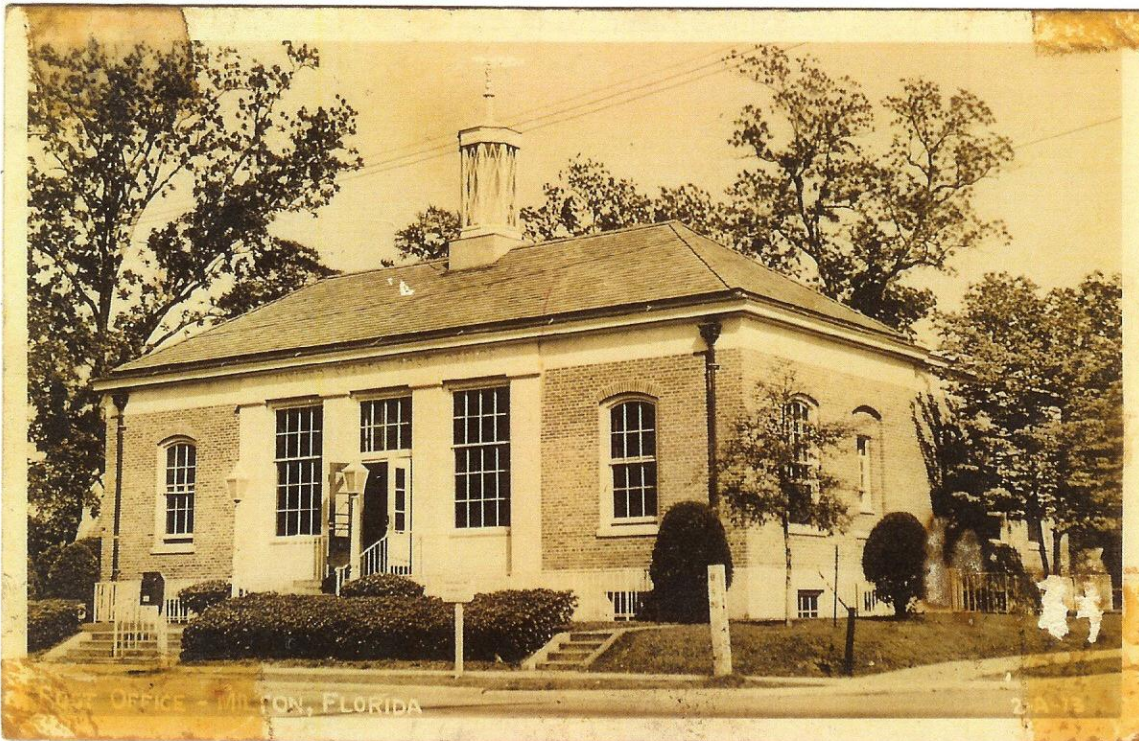




# THE WPA IN MILTON



In addition to the 1937 bridge across Marquis Bayou, Milton hosts two other significant examples of WPA projects - the old Milton Post Office (left), built in 1939, and the George Snow Hill mural (above) painted to hang inside that building. Since rural towns were among the hardest hit by the Depression the WPA targeted cities like Milton. Thus, the post office, the mural, *and the bridge* not only tell the story of Milton...but America at that point in our history.

For his mural, Hill chose to depict the lumber industry, which had been the backbone of Santa Rosa County for over one hundred years. Milton can be seen in the background with the courthouse and other recognizable buildings present. Though no such bridge as the one depicted above ever spanned the Blackwater, it is rumored then-congressman Millard Caldwell was trying to get one similar to this built across the river. Unfortunately, those plans were dashed for good just two years later when the U.S. entered World War II. In light of this, it is certainly appropriate for a bridge of this character to grace the Marquis Bayou.

Today the post office has been lovingly restored as an antique store, while the Hill mural hangs in the Museum of Local History. These landmarks, and others like them, are a tangible connection to our past.